

Digestive system organs

Outstanding Science Year 4 - Animals, including humans - OS4B001

National Curriculum Statutory Requirements

4B1 - describe the simple functions of the basic parts of the digestive system in humans

Learning Objective



I can identify and locate the main organs of the human digestive system.

Me:   

Teacher:   

The digestive system

Like all animals, humans need to **eat** in order to survive. The parts of the human body that process food make up the **digestive system**. The digestive system helps us to break down food and extract (take out) the useful parts. This is called **digestion**. The human digestive system has 5 main parts:

The mouth

Food is cut, mashed and softened by the mouth, tongue and teeth.

The oesophagus

A small lump of food called a bolus travels down this pipe.

The stomach

The stomach contains powerful acids to break down our food.

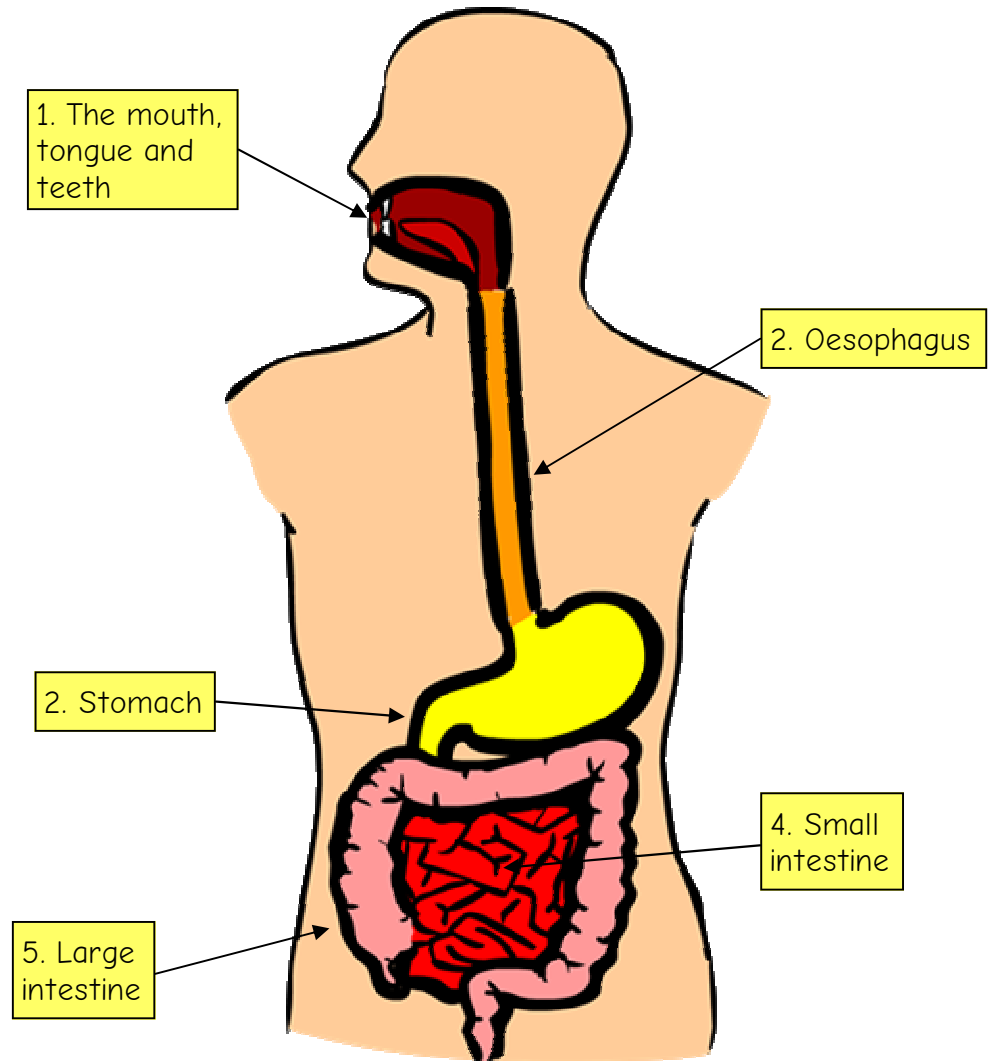
The small intestine

Much of the nutrients in our food are absorbed here,

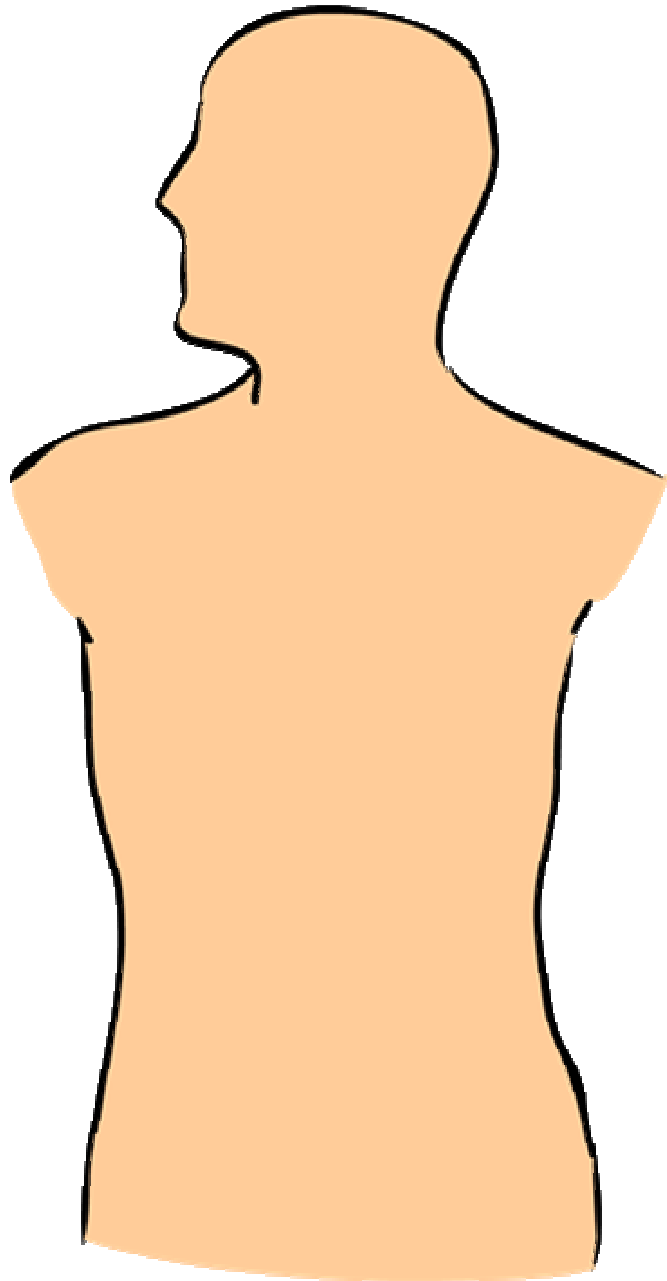
The large intestine

Water is removed and the remainder is expelled as faeces.

The major organs of the human digestive system

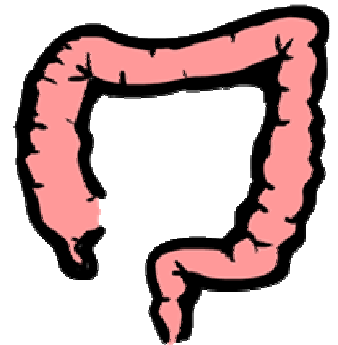
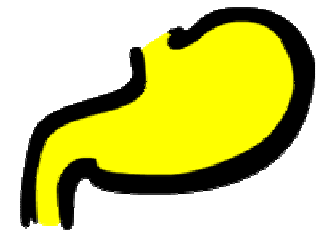
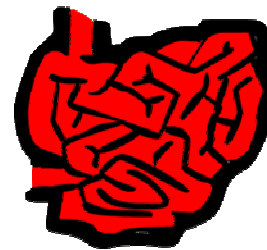


The human digestive system



Activity

Build your own model of the human digestive system. Carefully cut out the 5 different body parts by following the thick black outline. Stick them in place on the diagram to the left. Make sure that the large intestine overlaps the other organs. Label your diagram using the word bank below.



mouth
small intestine

Word bank
oesophagus
large intestine

stomach